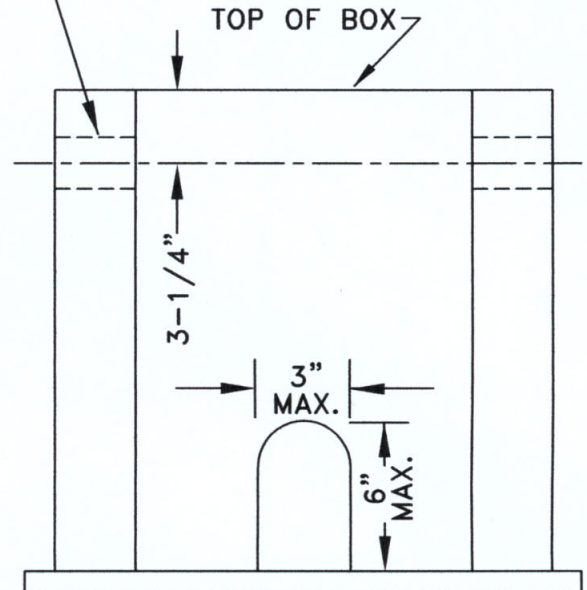
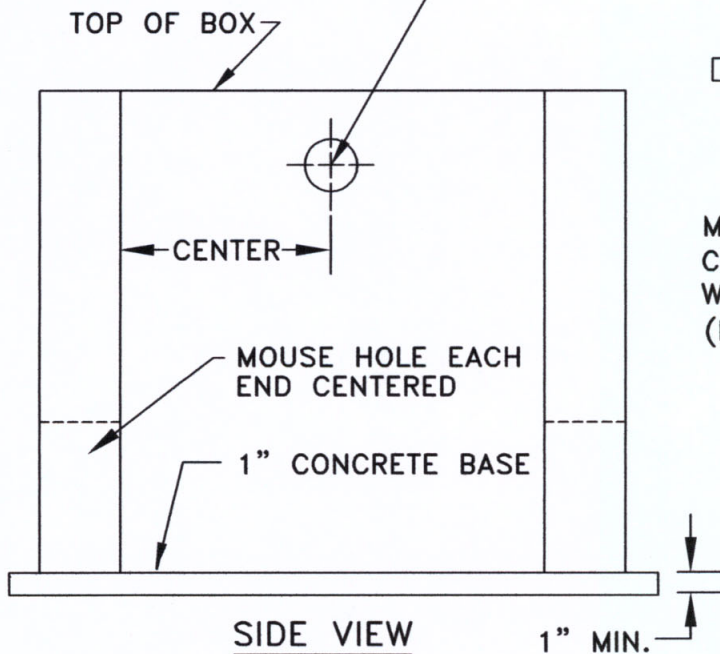


(2) 1-3/4"Ø HOLES NEEDED ONLY FOR CABLE CONDUIT IF MULTIPLE BOXES REQUIRED FOR SINGLE RADIO READ UNIT.
(REFERENCE DETAIL WDET002A)



(2) 1-3/4"Ø HOLES 1-3/4" FROM TOP OF THE BOX.
(AS NEEDED)



MXU TO BE INSTALLED IN MODIFIED CASTING COVER AS PER METRO WATER SERVICES PERMIT OFFICE.
(REF. DETAIL WDET015 & WDET015B)

MXU TO BE INSTALLED AS PER MANUFACTURES SPECIFICATIONS.

METER BOX MUST BE APPROVED CONCRETE DESIGN WITH CONCRETE BASE. BRICK CONSTRUCTION MAY BE USED WITH PRE APPROVAL FROM METRO WATER SERVICE.

METRO WATER SERVICES

STANDARD METER BOX
WITH RADIO READ CABLE
ACCESS AS NEEDED

NOT TO SCALE | DATE: 05/05/08

DWG. NO. WDET002A

METRO
WATER SERVICES

Hal Battley
LICENSED DISTRIBUTION OPERATOR

[Signature]
DIRECTOR OF WATER AND SEWERAGE SERVICES